

# MailGate<sup>®</sup>

Comprehensive, powerful, and easy-to-manage email security



Leaders Quadrant of Gartner Magic Quadrant  
for Managed File Transfer, 2008

Robust email security that significantly lowers cost of ownership.

## RISING EMAIL SECURITY CHALLENGES

While email is essential for business communication, it wasn't designed with security or regulatory compliance in mind. As spammers and hackers continue to exploit weaknesses in the world's email infrastructure, organizations face the challenge of protecting their networks from a barrage of junk email and inbound attacks, as well as constantly evolving threats such as image spam, botnets and zombie infections—all while trying to ensure the privacy and regulatory compliance of business-critical communications.

The costs, headaches and risks associated with these problems continue to increase. Organizations deploy a range of point solutions to defend against these multiple threats, but many of these solutions create security and management gaps.

## TAKE CONTROL OF EMAIL SECURITY

Tumbleweed MailGate<sup>®</sup> delivers the most robust, effective and easy-to-manage email security available. Through its unrivaled content filtering, antivirus, antispam and Intelligent Edge Defense capabilities, MailGate protects enterprises of any size against virus outbreaks, botnets, spam and denial-of-service attacks, effectively eliminating up to 90 percent of email traffic before it can penetrate corporate email infrastructure.

MailGate also prevents the kind of accidental email data leakage that can jeopardize corporate reputation and regulatory compliance. MailGate provides end-to-end email protection through intuitive policy controls that make it easy to enforce rules around content, users, recipients and attachments, while providing the widest range of policy actions, from blocking to encryption. MailGate reduces the complexity associated with protecting sensitive data through a simple check-box user interface that filters content such as credit card, Social Security and CUSIP numbers.

Built on a hardened Linux appliance, MailGate installs in minutes, processes close to 2 million messages an hour, and provides intuitive administrative controls and centralized management capabilities.

## COMPREHENSIVE EMAIL SECURITY

Tumbleweed offers unrivaled expertise in protecting organizations from security threats. With thousands of enterprise customers, award-winning 24x7 support, and more than 25 key technology patents, Tumbleweed leads the industry in developing practical solutions for trusted online communication.

### EFFECTIVE

- Virus protection and attachment stripping block malicious code
- Zero-hour protection against new spam and virus attacks
- Prevents accidental data leaks with deep content filtering of messages and more than 300 attachment types

### EASY-TO-USE

- Intuitive user interface with dashboard controls for all email security functions
- Flexible policy controls can block, quarantine, modify, reroute or encrypt messages
- Installs in minutes
- Real-time, automated reporting and message tracking
- Centralized management for multiple geographically dispersed appliances

### COMPREHENSIVE

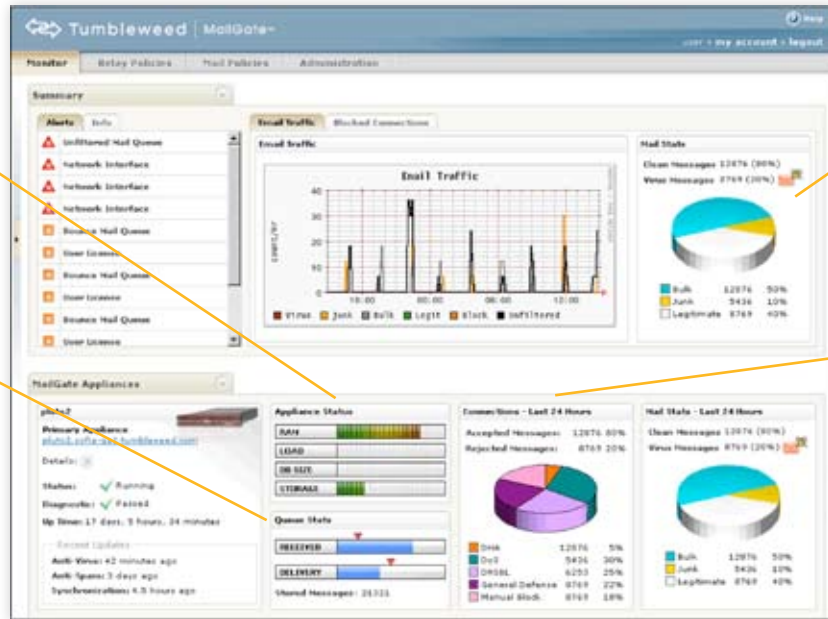
- Complete email security solution on high-performance appliances
- Intelligent Edge Defense controls SMTP connections and defends against directory harvest attacks and denial-of-service attacks
- Multiple spam filters provide more than 99 percent accuracy\* and the industry's lowest false positive rates

\* Independent testing by VeriTest measured 99.10% accuracy with 0 false positives



## FLEXIBLE, MODULAR SECURITY

Every enterprise has unique communication needs. That's why MailGate's flexible architecture lets you select the specific levels of protection you need now, while making it easy and straightforward to add new modules as security requirements increase.



System load information helps you monitor and balance the load for multiple appliances

Real-time snapshot of email classifies junk, bulk and legitimate mail as well as viruses

Monitoring of message queues lets you easily spot potential processing problems

Data on SMTP connections helps identify and track dark traffic

### INTELLIGENT EDGE DEFENSE

MailGate combines on-box anomaly detection and rate throttling with real-time zombie detection and IP reputation services to provide an effective defense against distributed botnet attacks. This unique combination of capabilities correlates and identifies spam outbreaks across multiple IP addresses, even if the IPs have been recently hijacked and have no existing negative reputation. The Intelligent Edge Defense module also eliminates directory harvest attacks, email denial-of-service attacks, malformed SMTP packets, invalid recipient addresses, and other forms of malicious and invalid messages, reducing raw email loads by more than 90 percent. And by verifying valid recipients at the perimeter, MailGate enables you to create IP-based block and allow lists, identify suspicious senders, and apply intelligent traffic shaping and message throttling for invalid messages.

### ANTISPAM

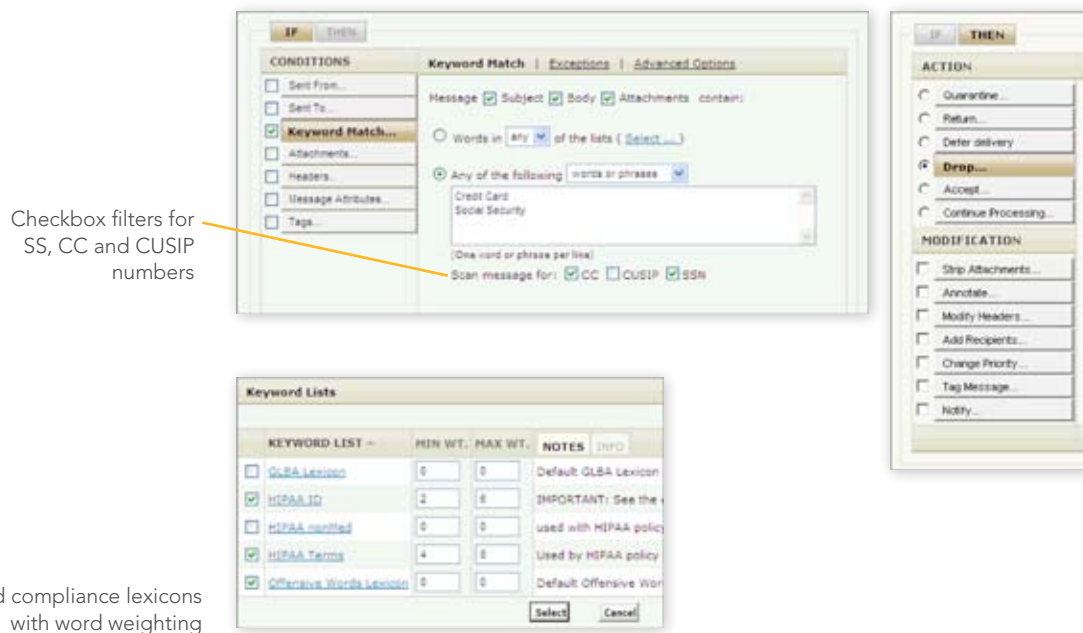
MailGate's layered antispam filtering technologies effectively block more than 99 percent of all inbound spam, with virtually no false positives. Antispam techniques include meticulous content and image analysis, and rules-based heuristics, with automated updates to all appliances every hour, 24x7. Tumbleweed's Message Protection Lab provides detailed human review and artificial intelligence-enhanced analysis of more than 400 million messages every day, to ensure the highest levels of accuracy and protection.

### ANTIVIRUS

Industry-leading Kaspersky or McAfee antivirus engines provide complete gateway protection from viruses, worms, Trojan horses, spyware and other forms of malware. MailGate enables you to develop custom virus scanning policies and block selected unauthorized file attachments and executables. And because the very first minutes and hours of new virus epidemics are critical, MailGate's Zero-Hour Virus Outbreak Protection quarantines suspicious messages and attachments in these decisive early hours. Administrators can specify duration of quarantines, so your enterprise is fully protected while waiting for antivirus vendors to provide virus signature updates.

## POWERFUL DASHBOARD CONTROLS AND SUPERB VISIBILITY INTO EMAIL COMMUNICATIONS

MailGate enables total control of email security through its easy-to-use, state-of-the-art management dashboard. This powerful tool lowers administrative costs by providing real-time feedback on email traffic, network attacks, spam statistics, message queues, content filtering and much more—even across multiple appliances. MailGate provides comprehensive and insightful reporting capabilities, including automated report generation and delivery, and advanced message tracking, thereby saving time and providing greater visibility into email communications.



Checkbox filters for SS, CC and CUSIP numbers

Standard compliance lexicons with word weighting

### CONTENT FILTERING

MailGate prevents accidental data leakage of sensitive and proprietary information, including information about customers, employees, intellectual property and data protected by industry and government regulations. In fact, through MailGate's simple checkbox content-filtering features, credit card, Social Security and banking/trading (CUSIP) numbers are fully protected. Additionally, extensive lexicons of financial terms, healthcare terms and offensive words and phrases are combined with flexible word-weighting to provide complete, granular control over a wide range of regulated information on all inbound and outbound messages. MailGate's deep content filtering capabilities can scan and analyze more than 300 types of attachments, including multiple levels of embedded archive files and hidden document text.

### POLICY MANAGER


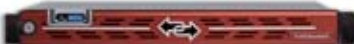

MailGate's Policy Manager provides powerful and streamlined tools for building and managing email security policies that protect the enterprise against accidental data leakage. Using MailGate's intuitive interface it's easy to build role-based rules based on senders, recipients, content, attachments, message headers and file size. Additionally, MailGate can automatically quarantine, return, drop, annotate, add disclaimers, modify headers or tag messages for future analysis.

### ENCRYPTION

MailGate provides automatic gateway-to-gateway strong encryption for any remote domain through policy-based Transport Layer Security (TLS) encryption. MailGate can enforce TLS connections with remote domains, hostnames, partner sites or IP addresses, and provides clear reporting on TLS attempts and failures. Automatic alerts tell an administrator if remote sites are not supporting TLS connections and quickly identify problems such as expired certificates.

For a complete encryption platform, integrate MailGate with Secure Messenger™. Positioned in the Leaders Quadrant of Gartner Magic Quadrant for Email Encryption 2007, Secure Messenger is an email encryption platform that protects, analyzes, manages and reports on email traffic flowing in and out of the organization.

# Tumbleweed MailGate Appliance

PRODUCT MODULES	APPLIANCE MODULES
INTELLIGENT EDGE DEFENSE	<b>4600 Series</b>  Cost-effective and easy to deploy for any organization
IP REPUTATION	
ANTISPAM	<b>5600 Series</b>  High performance, built-in redundancy, enterprise scalability
ANTIVIRUS	
VIRUS OUTBREAK DETECTION	<b>6600 Series</b>  Highest performance for the most demanding enterprise environments
POLICY MANAGER	
ENTERPRISE MANAGER	

## HIGH-PERFORMANCE, EASY-TO-INSTALL APPLIANCES WITH CENTRALIZED MANAGEMENT

MailGate is available as a high-performance, hardened Linux appliance in a range of sizes to meet the needs of any organization. Each appliance is designed for reliability with redundant disk drives, RAID controllers and optional redundant power supplies. Embedded remote access controllers provide serviceability with no need to unrack the appliance. In the event of a hardware failure, Tumbleweed provides worldwide onsite hardware support.

MailGate's inbound and outbound email security functions can be controlled through a single, clearly organized dashboard with tabs for each product module. The admin dashboard also provides centralized management of multiple distributed appliances, and supports multiple administrators through a delegated, role-based system. MailGate's clear and logical user interface makes it easy to set up new administrators and assign them appropriate rights based on specific job functions. MailGate's dashboard management features greatly reduce administrative costs while providing redundancy, high availability, scalability and secure management for large and distributed organizations.

## LEARN MORE TODAY

To learn more about how Tumbleweed's MailGate suite of email security solutions can defend your organization against viruses, spam, denial-of-service attacks and the kind of accidental email data leakage that could jeopardize security and regulatory compliance, call your regional office listed below, email us at [info@tumbleweed.com](mailto:info@tumbleweed.com), or visit us at [www.tumbleweed.com](http://www.tumbleweed.com)

Leaders Quadrant of Gartner Magic Quadrant for Managed File Transfer, 2008

## TUMBLEWEED PRODUCT LINES



### Managed File Transfer

SecureTransport™ provides a centrally managed system for monitoring and managing secure file transfer activity across multiple file transfer sites or applications. SecureTransport integrates with the existing infrastructure and allows organizations to meet regulatory compliance mandates, and control and manage the transfer of files inside and outside of the corporate firewall.



### Email Encryption

Secure Messenger™ is an email encryption platform that protects, analyzes, manages and reports on email traffic flowing in and out of the organization. Secure Messenger's enterprise-class, component-based architecture includes a state-of-the-art SMTP relay and a powerful policy engine. By monitoring messaging at the Internet gateway with a complete set of email security capabilities, Secure Messenger provides the most effective and reliable method to secure inbound and outbound email streams.



### Email Security

MailGate® is a robust, easy-to-manage email security solution providing comprehensive inbound threat protection and outbound data loss prevention. Unrivaled antivirus, antispam, and Intelligent Edge Defense capabilities deflect junk email and inbound attacks, eliminating up to 90 percent of email traffic before it enters the network. MailGate's simple checkbox content filtering, an intuitive policy manager and automatic gateway-to-gateway encryption make it easy to prevent accidental data leakage.



### Identity Validation

Validation Authority™ ensures the validity and integrity of highly valued and trusted transactions by validating digital certificates in real time. This comprehensive, scalable and reliable framework can validate certificates issued by any Certificate Authority.



**North America**  
Corporate Headquarters  
1600 Seaport Blvd.  
Suite 400, South Bldg.  
Redwood City, CA 94063  
Tel: 1-877-282-7390

**EMEA**  
Teal House, 2nd floor  
3 Cowley Business Park  
High Street, Cowley  
Uxbridge  
UB8 2AL  
Tel: +44 (0) 1895 202 780

**APAC**  
8 Shenton Way  
#31-01 Temasek Tower  
Singapore 068811  
Tel: +65 6419 5486  
Fax: +65 6777 3922

Web: [www.tumbleweed.com](http://www.tumbleweed.com)  
E mail: [info@tumbleweed.com](mailto:info@tumbleweed.com)

Copyright © Axway, 2009 All rights reserved. Tumbleweed, the Arrows logo, SecureTransport, Secure Messenger, MailGate and Validation Authority are either registered trademarks or trademarks of Axway in the United States and/or other countries. All other trademarks are the property of their respective owners.  
3/09