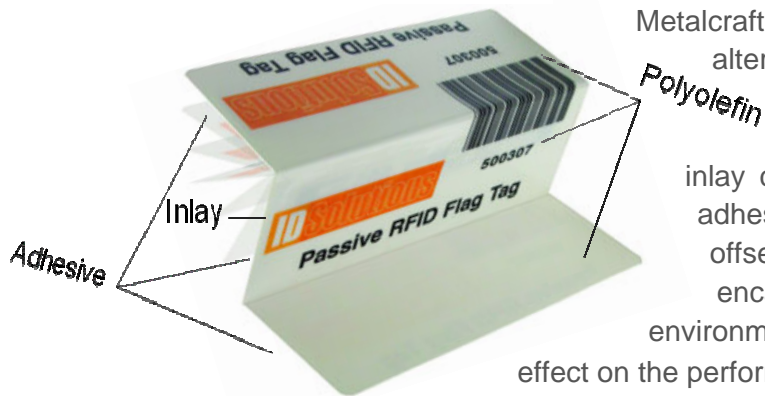




RFID Folded Tab Tag *



Metalcraft's RFID Folded Tab Asset Tags are a good alternative to other metal mount options or other asset tracking applications where space is a premium like blade servers and a typical inlay cannot be used. This product consists of an adhesive label with a non-adhesive, folding tab that offsets the inlay. The inlay is completely encapsulated within the tag protecting it from environmental conditions that could have an adverse effect on the performance and life of the RFID tag.

Inlay is sealed between two layers of adhesive and protected by two layers of polyolefin

Applications

- Asset Tracking

Materials

- **Material:** Standard material is polyolefin; total thickness is .032". Optional materials include polypropylene, polyester and polycarbonate.
- **Standard Adhesive:** .0035" thick pressure-sensitive adhesive that provides excellent adhesion to uneven, rough or even slightly oily surfaces.
- **Construction:** RFID inlay encapsulated between polyolefin

Specifications

Styles:	One-Color, Two-Color, Three-Color, Four-Color
Numbering Options:	No Numbers (Copy Only), Serialized/Unserialized Numbers, Bar Code with Human Readable Numbers (RFID inlay programming included)
Standard Sizes:	No. 1305 – 4 ½ x 4 ½" (fold to 4 ½ x 3") Additional sizes available.
Standard Production Time	15 work days
Standard Colors:	black, red, yellow, green and blue

	Custom colors available
Read Range:	Using an AR400 portal reader at 24dbm (1/4 maximum power) read ranges were 20+ feet.
Standard RFID Inlay:	Rafsec Short Dipole RFID inlay
Environment:	Mild and moderate. Resists moderate solvents and caustics/acids

- Print Process: subsurface print
- Print Copy: variable data such as bar code and/or human readable
- Affixing Method: pressure sensitive acrylic and rubber based adhesives
- Applications: fixed asset application with metal surface or liquid storage container
- Concept: 4.5" x 4.5" label divided into three scored sections with the middle containing the RFID inlay; two of the sections adhere to each other while the third section adheres to the asset being tracked
- Operating Temp: -25°C/-13°F to 65°C/149°F (inlay manufacturer rating)
- Read Range: 20+ ft using Motorola AR400 reader at 24 dbm**

* Inlays and product constructions not shown actual size.

** Read range may differ by environment.