



FALKEN
Secure Networks

Durable RFID tags and labels for any environment

Metal Mount Tags



Short or Long Run Orders • Unique Solutions • Harsh Environment Encapsulations



Part Number: WF-SM-SA

Size: 7" x 8"

Standard Frequencies: 915 MHz UHF

Approx. Read Range: 5 ft. / 3 ft. on metal

Communication Protocol: EPC Class1 Generation 2

Applications: Cable, Fiber Optic, Medical, Metal Mount, Tote Handles, Harsh Environments

Description: A completely unique design, our snap-around tags allow you to bring the benefits of RFID to new applications. Use these simple-to-install tags to mark cable runs, carts or pipelines, or snap them around any circular surface.

Size can be adjusted to allow other inlays, frequencies and applications.



Part Number: WF-SM-13

Size: 7.625" x .8125" x .6875"

Standard Frequencies: 915 MHz UHF

Approx. Read Range: 18 ft. / 6 ft. on metal

Communication Protocol: EPC Class1 Generation 2

Applications: Automotive, Transportation, Vehicles, Harsh Environments

Description: Perfect for tracking metal bins or parts in WIP situations, this durable, metal mount tag can be exposed to the most rigorous environments and still function perfectly. Use where exposure to oil, gasoline, MEK, alcohol, acetone or other chemicals is unavoidable.

Size and shape can be adjusted to allow other inlays, frequencies and applications.



Part Number: WF-SM-22

Size: 4.5" x 1.125" x .1875"

Standard Frequencies: 860-960 MHz UHF, "World" Tag

Approx. Read Range: 25 ft. / 3 ft. on metal

Communication Protocol: EPC Class1 Generation 2

Applications: Metal Mount, Automotive, Fleets, Warehouses, Metal Carts

Description: This tag can be used to stealthily identify fleet trucks, tractors, forklifts or other critical assets. Mounted on the inside window of a vehicle, it offers unparalleled read ranges, but can also be used directly on metal surfaces.

Sizes can be adjusted to allow other inlays, frequencies and applications.



Part Number: WF-SM-23

Size: 1.625" x 2" x .1875"

Standard Frequencies: 915 MHz UHF

Approx. Read Range: 18 ft. / 2 ft.
on metal

Communication Protocol: EPC Class1
Generation 2

Applications: Metal Mount, Automotive,
Fleets, Warehouses

Description: This low-profile tag can be
used to stealthily identify fleet trucks,
tractors, forklifts or other critical assets.
Mounted on the inside window of a vehicle, it

offers excellent read-ranges, but can also be used directly on metal surfaces.

Sizes can be adjusted to allow other inlays, frequencies and applications.



Part Number: WF-SM-24

Size: 6" x .375"

Standard Frequencies: 915 MHz UHF

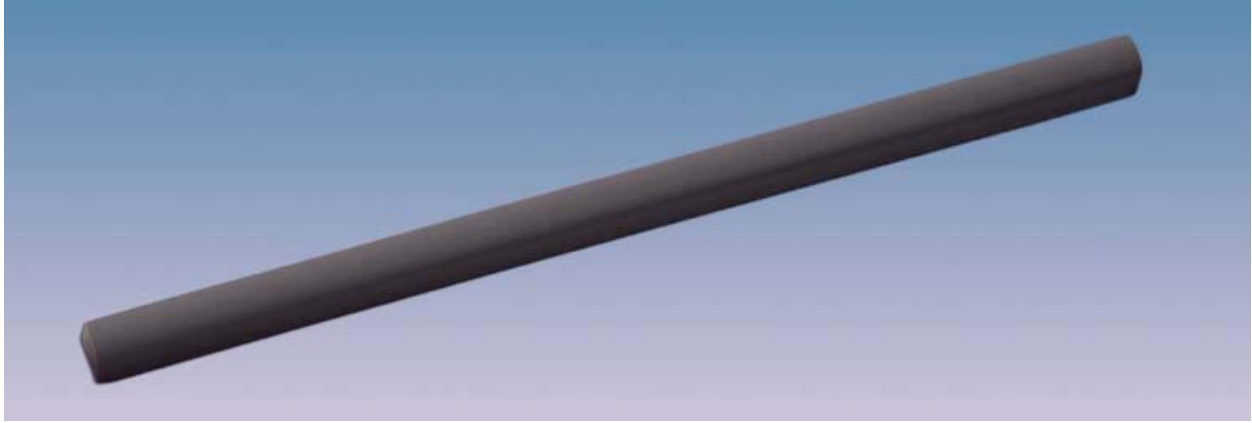
Approx. Read Range: 15 ft. / 3 ft. on metal

Communication Protocol: EPC Class1 Generation 2

Applications: Low-Profile, WIP, Computer Tracking, Component Identification

Description: Built to fit where other tags don't, this unique construction provides serious performance in a sleek low profile design. Fully metal mount and flexible, it's perfect for a wide variety of applications. Adhesive backings provide peel-and-stick convenience.

Size and shape can be adjusted to allow other inlays, frequencies and applications



Part Number: WF-SM-25

Size: 6" x .25" x .25"

Standard Frequencies: 915 MHz UHF

Approx. Read Range: 20 ft. / 9 ft. on metal

Communication Protocol: EPC Class1 Generation 2

Applications: Automotive, Transportation, Vehicles, Harsh Environments

Description: Perfect for tracking engines or other automotive parts, this durable tag can be exposed to the harsh environments and still function perfectly. Bending to accommodate convex or concave surfaces, it provides a low-profile solution for all your metal mount RFID needs.

Size and shape can be adjusted to allow other inlays, frequencies and applications.



Part Number: WF-SM-27

Size: 6.75" x 3"

Standard Frequencies: 915 MHz UHF

Approx. Read Range: 20 ft. / 7 ft. on metal

Communication Protocol:

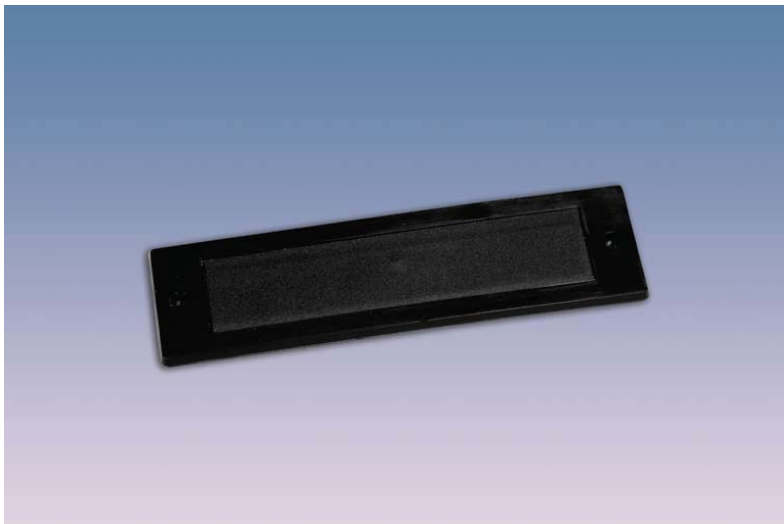
EPC Class1 Generation 2

Applications: Warehouses, High-visibility, Barcode integration

Description: Perfect for warehouses in technology transition, this rack tag merges standard Barcodes with RFID technology.

Using an isolating adhesive offset, it can be successfully clipped on metallic racks or pallets.

Sizes can be adjusted to allow other inlays, frequencies and applications.



Part Number: WF-SM-40

Size: 4.125" x 1.25" x .125"

Standard Frequencies: 915 MHz UHF

Approx. Read Range:

12 ft. / 4 ft. on metal

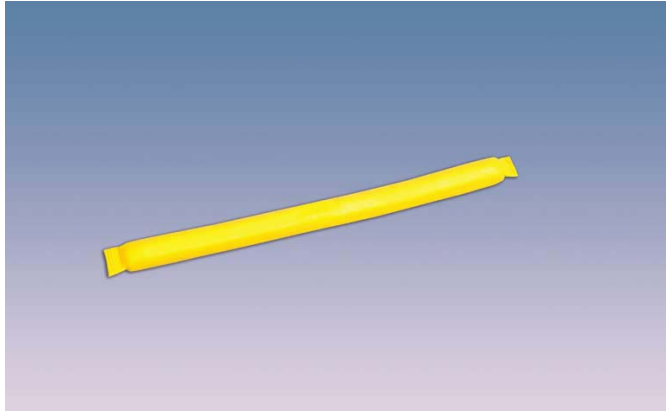
Communication Protocol:

EPC Class 1 Generation 2

Applications: High Value Assets, Metal Mount, Automotive, Fleets, Warehouses, WIP

Description: Perfect for long-term marking of critical assets like laptops and computers, this tag is also metal mountable. Flexible design can be screwed, adhered or riveted in place and is at home in both corporate and industrial settings. Hardened plastic offers high durability.

Size and shape can be adjusted to allow other inlays, frequencies and applications.



Part Number: WF-SM-IN03

Size: 5.5" x .25" x .25"

Standard Frequencies: 915 MHz UHF

Approx. Read Range: 20 ft. / 9 ft. on metal

Communication Protocol: EPC Class 1

Applications: High Value Assets, Metal Mount, Automotive, Fleets, Warehouses, WIP

Description: Rugged shrink wrap protects this flexible and embeddable RFID tag from harsh environments and the elements. Metal mount ready, it offers exceptional read ranges and reliability.
Size and frequencies can be adjusted to fit your application.

Contact Information

Call today for all your custom RFID needs:

David Kennedy, VP and Gen. Mgr. Phone: (519) 268-7604;

E-mail: david.kennedy@falkensecurenetworks.com

Web: www.falkensecurenetworks.com