



FALKEN
Secure Networks



STREETEAGLE

Tracking Solutions

STREETEAGLE GPS Fleet Tracking Kit

Advanced GPS with Cellular Fleet tracking and reporting



The **Streeteagle LMU-2600** fleet tracking unit offers leading edge technology for reporting vehicle telematics including a 60 G-force 3-axis accelerometer for measuring driver behavior such as hard braking and cornering and vehicle collision impacts while offering a broad range of high reliability telematics fleet customers demand. Buffered storage of up to 20,000 messages if outside cellular coverage and automatic download when network connectivity is restored. Easily installs on any vehicle.



Complete 'Ready to Install' Kit Includes:

- LMU2600 GPS, 2G/3G GSM or CDMA Cellular Tracking Unit
- Internal GPS and Cellular Antenna
- Fused Wiring Harness w/ 2 Serial Dongles
- Velcro Mounting Tape
- Installation Parts Kit w/ Fuse Taps
- Internal 3-axis Accelerometer



The **Streeteagle LMU-2600** employs CalAmp's industry leading on-board alert engine, PEG™ (Programmable Event Generator). This advanced engine monitors external conditions and supports customer-defined, exception-based rules to help meet the needs of your application. PEG continuously monitors the vehicle environment and responds instantaneously to pre-defined threshold conditions related to time, date, motion, location, geo-zone, input and other event combinations. This behavior can be programmed by us before shipment, at a customer's facility, or over-the-air once the unit has been fielded.

StreetEagle

dramatically extends the power of GPS fleet tracking with the most comprehensive, high detail reporting options available in the industry today.

OVER 65 REPORTS AVAILABLE



Specifications:

Network:	2G/3G GSM/GPRS/HSPA Quadband, CDMA/1X Packet Data
GPS	Super Sensitive 50 Channel GPS (with SBAS)
Comprehensive Inputs/Outputs Digital Inputs Digital Outputs Serial Interface Analog Inputs 1-Wire® Interface Status LEDs	5 (1 fixed bias low, 4 programmable bias) 3 relay driver (200 mA) 2 (1 TTL serial, 1 switched power TTL) 2 (1 internal VCC monitor, 1 external A/D input) Driver ID, temperature sense GPS and cellular
Antenna	Integrated Cellular/GPS, optional external antenna
Shock & Vibration	SAE J1455, US Military Standards 202G and 810F
Motion Detection	Built-in 3-axis accelerometer for motion sense
Weight (incl. battery)	32 oz, (907 g)
EMC/EMI	SAE J1113; FCC–Part 15B; Industry Canada
Geo-Fencing	Up to 32 separate definable geo-fences
Location Accuracy	2.0 meter CEP (with SBAS)
Message Storage	Up to 20,000 buffered messages in event of no cellular network connectivity. Automatic download when network connectivity is restored
Garmin	Garmin FMI support
Configuration Parameters	PEG rules, device management and firmware can all be updated over the air. Works with all Streeteagle Service Plans
Driver ID	1-Wire Interface for Driver ID , Temp. Sense
Operating Temp.	-30° to +85° C .
Dimensions (inches)	2.0 x 4.0 x 0.85 inches (51 x 102 x 22 mm)
Fully Certified	FCC, CE, IC, PTCRB, applicable 3G cellular network carriers, RoHS Compliant
Operating Voltage	6-32 VDC
Power Consumption	(@ 12V): Standby ~70 mA, Transmit ~150 mA 3 mA @ 12V (deep sleep) 10 mA @ 12 V (sleep on network with SMS) 20 mA @ 12 V (sleep on network with GPRS) 70 mA @ 12 V (active tracking)
Battery	Internal Li-Ion Non-Rechargeable, Field Replaceable 3.6V, 57Ah. 7 year service life for one report daily. Voltage monitoring and low battery notification via LED on device and in software. Power Management sleep mode.
Mounting	Tie-wrap, adhesive, or Velcro Screw mounting bracket



FREE STREETEAGLE DOWNLOADABLE APP for your mobile device.



StreetEagle gives you complete visibility and control of your vehicle(s) with native apps for your Apple and Android devices. Our FREE App allows you to quickly download and access your StreetEagle GPS Tracking account from virtually any smart device. Optimized for both smartphones and tablets, the StreetEagle Mobile App gives you an easy to use interface containing real-time vehicle tracking, vehicle history mapping, vehicle control, and more.



Monitor and report real-time location and defined events of all company vehicles using our professional GPS tracking service. Available as an 'IT-Lite' hosted SaaS (Software as a Service) annual subscription model or client premises-based.

Features Available:



Real-Time Tracking

Real-time GPS vehicle tracking reports provide you with detailed vehicle information to improve your business operations.

THIS DETAILED INFORMATION HELPS IMPROVE YOUR BUSINESS OPERATIONS BY PROVIDING VALUABLE INSIGHT SUCH AS:

- Vehicle travel time
- Vehicle idle time
- Vehicle mileage reports
- Vehicle speed
- Vehicle location and status
- All captured and imported directly into the StreetEagle software for easy access to review



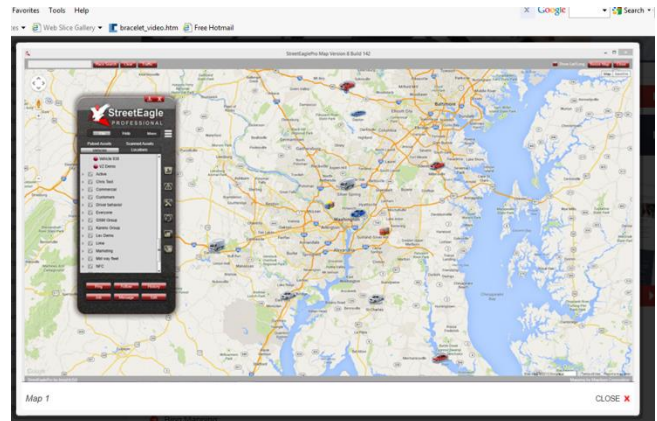
- **Mapping** utilizing Google Maps



- **Locations** StreetEagle enables users to take control of job location information and maximize efficiency of tracking each individual job site.

LOCATION FEATURES ALLOW YOUR TEAM TO:

- Identify and save job sites, customer locations, employee addresses, and other frequently visited addresses to be displayed on the StreetEagle Mapping software.
- Set virtual Geo-fences around locations to know when employees arrive or depart.
- Verify time spent at locations to settle customer complaints and verify billable hours history.

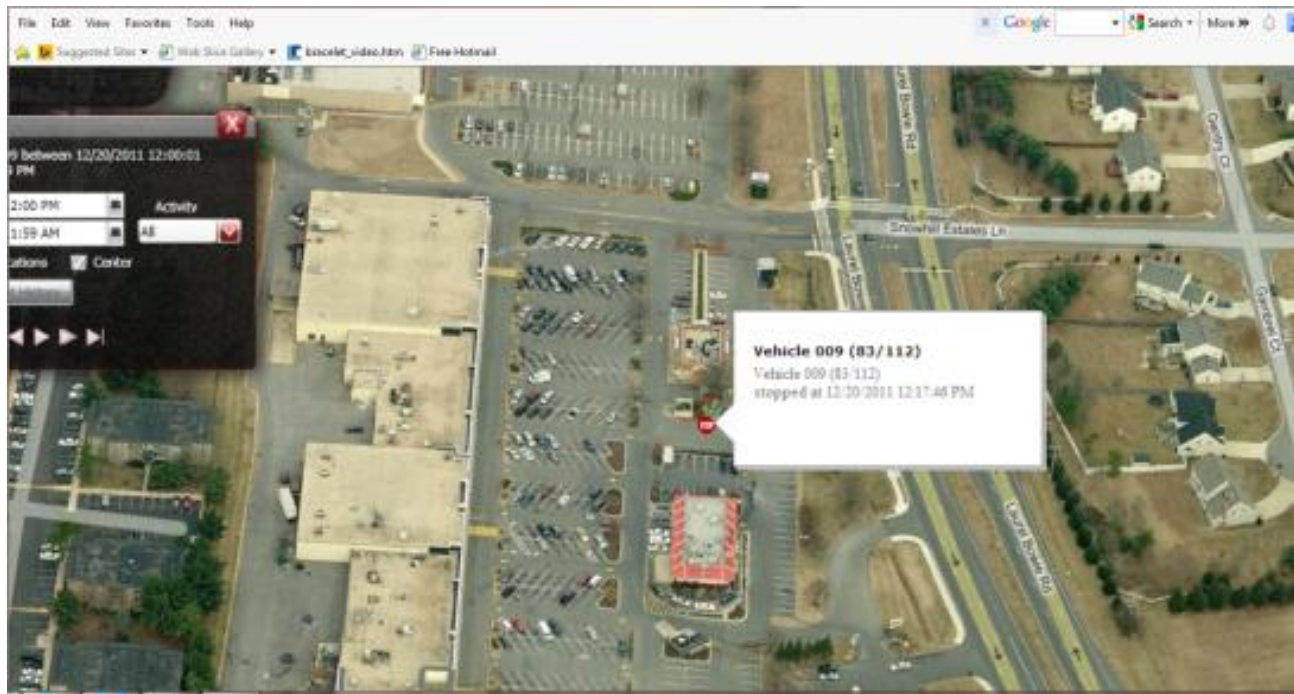


History

Re-trace and validate your fleets' driving activities

StreetEagle's History feature allows users to replay and validate the route history of any mobile workforce vehicles. Whether your mobile workforce is small or large, keeping track of their driving history is critical in knowing how time is being spent. StreetEagle's History feature allows users to replay and validate the route history of any of the vehicles within the mobile workforce.

The TRIPS feature allows you to view driver history according to trips they've taken (start point, end point and all activity in between)





▪ Fleet Status

The StreetEagle Fleet Status Monitor provides users with a quick and easy way to view the location and engine status of their entire fleet. Delivering vehicle engine status-- in-transit, parked, idling, stopped, etc., duration of the vehicle status, and the current location of the vehicle.

Vehicle	Status	MPH	Location	Date	Driver ID	Driver Status	Job Id
1502		0	123 E Highland Pkwy, Roselle, NJ 07203	7/2/2013 1:22:45	1175	Available DEST	13-140908-DEST
1503		0	235 Sycamore Ave, Voorhees, NJ 08043	7/2/2013 4:35:41	1317	InTransit	POST-Voorhees OTA
1504		0	211 Sycamore Ave, Voorhees, NJ 08043	7/1/2013 7:25:39	0956	Available DEST	13-136965-DEST
1505		26	696 Grove Ave, Edison, NJ 08820	7/2/2013 4:33:00	1306	InTransit	13-133439-SCENE
1506		19	10 E Somerdale Rd, Somerdale, NJ 08083	7/2/2013 3:42:32	0385	Log Out	13-141837-DEST
1507		0	23 S Passaic Ave, Chatham, NJ 07928	7/2/2013 4:32:26	0204	InTransit	13-137217-DEST
1508		0	11 Brunswick Ave, Edison, NJ 08817	7/2/2013 2:27:44	1270	InTransit	13-140986-SCENE
1509		1	164 Park Dr, Voorhees, NJ 08043	7/2/2013 9:35:54	1222	InTransit	POST-Voorhees OTA
1510		34	217 Sycamore Ave, Voorhees, NJ 08043	7/2/2013 4:33:00	1077	InTransit	POST-SuJa-Clementon
1511		0	76 Gordon Ave, Williamstown, NJ 08094	7/2/2013 2:47:49	1307	Available DEST	13-141812-DEST
1515		0	57 Adrian Way, Edison, NJ 08820	7/2/2013 3:22:37	1306	Arrive SCENE	13-141715-DEST-0447
1516		0	ON I-80 NEAR Lanidex Plaza, Parsippany, NJ 07054	6/28/2013 9:32:48	1032	Available DEST	13-139931-DEST
1520		55	133 E Highland Pkwy, Roselle, NJ 07203	7/2/2013 4:33:00	1270	Arrive DEST	13-141908-DEST
1521		0	119 E Highland Pkwy, Roselle, NJ 07203	7/2/2013 11:31:55	0362	Arrive SCENE	13-133423-DEST
1522		0	119 E Highland Pkwy, Roselle, NJ 07203	7/2/2013 3:10:41	0482	InTransit	13-104961-SCENE
1523		0	1623 US-22, Bound Brook, NJ 08805	7/2/2013 2:57:16	1087	Available DEST	13-141761-DEST
1524		0	133 E Highland Pkwy, Roselle, NJ 07203	6/27/2013 3:52:30	0256	At Post	13-137130-DEST
1525		0	291 Pomponio Ave, South Plainfield, NJ 07080	7/2/2013 10:57:55	1311	On Site	13-123164-DEST
1526		0	5 Cherry Ln, West Orange, NJ 07052	7/2/2013 1:39:13	0138	On Site	POST-Livingston Mail
1527		0	168 Park Dr, Voorhees, NJ 08043	7/1/2013 7:24:58	1308	InTransit	13-135070-SCENE
1528		0	166 Park Dr, Voorhees, NJ 08043	7/1/2013 7:25:18	1124	InTransit	13-139935-DEST
1529		0	170 Park Dr, Voorhees, NJ 08043	7/1/2013 7:26:48	0385	On Site	13-137879-DEST
1531		0	217 Sycamore Ave, Voorhees, NJ 08043	7/1/2013 5:36:06	1308	Available DEST	13-140921-DEST-0447
1532		2	84 CR-527, Livingston, NJ 07039	7/2/2013 4:31:33	0204	InTransit	13-141919-SCENE



Reporting



StreetEagle dramatically extends the power of GPS fleet tracking with the most comprehensive, high detail reporting options available in the industry today.

Fleet Report Card

Over 65 Available Reports, Including:

- **Complete Activity Report*** – Access overviews of complete vehicle activity throughout the day including vehicle stops, parks, in-transits, speeding events, idling, driver status, and communications
- **Vehicle Idling Report*** – View vehicle idle time to reduce fuel and maintenance costs.
- **Vehicle Speeding Report*** – Monitor fleet speeding events to increase driver safety.
- **Geographic Analysis Report*** – View vehicle arrival/departure times from a specific location or geo-fence.
- **Vehicle Usage Report** – View the vehicle usage of your mobile workforce.
- **State-by-State Fuel Tax Mileage Report*** – Accurately verify mileage in each state traveled.
- **Vehicle Park/Stop Report** – View the locations where your vehicles have stopped or parked.
- **Vehicle Maintenance Management Report** – View the vehicles scheduled for routine maintenance.
- **Inactive Vehicle Report** – View the vehicles that have been "inactive" for a specified amount of time.
- **PTO Sensor/Proof of Service Report** – Accurately verify service has been completed and resolve customer disputes.
- **Job Time Report*** – Detailed listing of all time spent at known job sites.
- **Collection Report** – Determine which collections have been completed and which remain incomplete.
- **Virtual Time Clock Report*** – Confirm actual hours worked by your mobile workforce.
- **Detailed Vehicle Report and Fleet Summary Report** – View other critical information for managing your fleet.
- **Driver Behavior Monitoring Reports** – Measure unsafe driving practices like speeding, hard braking, fast cornering and more on an individual or fleet-wide level.
- **After Hours Usage Report** – Keep accurate track of who is driving which company vehicles outside of normal work hours.
- **Fuel Tax Reports** – Details miles driven in individual states for fuel tax reporting purposes.
- **Asset History Report** – Provides a detailed account on a mobile asset's locations and status during a specific time frame.

* Both detailed vehicle report and fleet summary report.

Report Auto Scheduler

Schedule to have any of the management reports e-mailed daily, weekly, or monthly, directly to your e-mail inbox or web-enabled hand-held device.

StreetEagle

PROFESSIONAL

Friday, November 22, 2013

Complete Activity Report

Vehicle: Vehicle 028

From: 11/19/2013 12:00:00 AM EST

To: 11/19/2013 11:59:00 PM EST

Speed Threshold: 60 mph

Stop Threshold: 2 minutes

Date	Time	Activity	Duration	Mileage	Total Mileage	Info (Click to plot on map)
11/19/2013	4:46:52 AM	Started	-	-	0.0	5450 Wellington Rd, Gainesville, VA 20155
	4:48:52 AM	In Transit	00:02:00	0.0	0.0	
	4:48:52 AM	Parked	00:03:38	0.0	0.0	5445 Wellington Rd, Gainesville, VA 20155
	4:50:20 AM	Started	-	-	0.0	5445 Wellington Rd, Gainesville, VA 20155
	4:50:20 AM	In Transit	00:05:04	0.0	0.0	
	4:55:24 AM	Stopped / Idling	00:09:06	0.1	0.1	5447 Wellington Rd, Gainesville, VA 20155
	5:04:30 AM	In Transit	00:04:00	1.9	1.9	
	5:08:30 AM	Stopped / Idling	00:07:58	0.1	2.0	ON Merrifield Garden Way NEAR Balls Ford Rd, Manassas,
	5:16:28 AM	In Transit	00:02:00	0.4	2.4	
	5:18:28 AM	Stopped / Idling	00:02:00	0.5	2.9	7200 Cushing Rd, Manassas, VA 20109
	5:20:28 AM	In Transit	00:02:00	1.9	4.8	
	5:22:28 AM	Speeding	00:02:00	1.9	6.6	Max: 60.0 Average: 60.0
	5:24:28 AM	In Transit	00:08:01	7.2	13.8	
	5:32:29 AM	Speeding	00:02:00	2.0	15.9	Max: 61.0 Average: 61.0
	5:34:29 AM	In Transit	00:04:01	2.8	18.7	
	5:38:30 AM	Speeding	00:02:00	2.0	20.6	Max: 63.0 Average: 63.0
	5:40:30 AM	In Transit	00:06:00	3.9	24.5	
	5:46:30 AM	Stopped / Idling	00:04:01	1.1	25.7	1612 VA-123, Mc Lean, VA 22101
	5:50:31 AM	In Transit	00:14:01	6.0	31.6	
	6:04:32 AM	Stopped / Idling	00:55:05	1.5	33.2	1617 Foxhall Rd NW, Washington, DC 20007
	6:59:37 AM	In Transit	00:07:35	0.3	33.5	
	7:03:21 AM	Stopped / Idling	00:08:46	0.1	33.6	4412 MacArthur Blvd NW, Washington, DC



Alerts & Notifications

StreetEagle instantly alerts you when it detects a predefined condition violation that requires an immediate response. The following alerts and notifications are provided with StreetEagle Tracking Solutions:

- **Speeding Alert** – Improve driver safety and fuel efficiency.
- **Posted Speed Alert** – Be aware when a driver is going faster than the posted speed limit.
- **Idling Alert** – Cut fuel costs and reduce employee downtime.
- **Geo-fence Alert** – Monitor when your vehicles enter/exit a virtual perimeter around a geographic location.
- **Motion Alert** – Identify unauthorized vehicle use with instant alerts when your vehicles are utilized outside of normal operating hours.
- **First Movement of Day Notification** – Keep track of your employees' daily "clock in" to improve productivity.
- **PTO Activation Alert** – Monitor when external vehicle systems are activated.
- **Analog Sensor Alert** – Alerts for analog sensor measurements of temperature, tank pressure, fuel levels, etc.
- **Tampering Alert** – Prevent tracking downtime due to driver tampering.
- **Long Stop Alert** – Keep your drivers on the move and on task.
- **Driver Behavior Alert** – Know exactly when and where a driver is driving in an unsafe manner, or one beyond the bounds of company policy.
- **Tow Alert** – Instant notification when a vehicle moves while the ignition is off.
- **Battery Alert** – Be notified when one of your vehicles has a low or dead battery.



Administration

The administration feature allows you to control all StreetEagle features so that appropriate users can have access to the specific data. The administration tool provides businesses with the capability to allow or deny access to specific information within the StreetEagle tracking system.



Route Optimization

StreetEagle's route optimization gives GPS vehicle tracking dispatchers the tools needed to cut operating costs, reduce fuel expenses, and boost productivity. It's a remarkably easy, cost-effective way to optimize your company's routes and help reduce wasted fuel, time, and mileage. Import or enter job orders into StreetEagle to plan job sequences, assignments, most efficient stop order and estimated times of arrival.

- **Optimization Options** – With StreetEagle dispatchers can optimize routes by shortest time or distance. Stops can be manually sorted to customize the route. Dispatchers can also reverse the route to account for time-of-day traffic patterns.

- **Import your existing routes** – Dispatchers can import existing routes from an excel spreadsheet into StreetEagle. These routes can be managed, optimized, and then sent to Drivers via **StreetEagle Dispatch**.
- **Route Management** – Dispatchers can easily add, remove, or edit stops on existing routes. Edited routes can easily be re-optimized and sent to drivers in real-time. Routes may also be printed and given to Drivers.



▪ **Messaging**

With StreetEagle, GPS fleet tracking dispatchers are able to reach their employees through various modes of communication.

StreetEagle Dispatch by Garmin

Integrated Garmin Navigation equipment is designed for managers who want the power of advanced GPS tracking, route dispatching, job management, driver status reporting, two-way messaging and in-vehicle navigation in one complete package.

- StreetEagle seamlessly integrates with Garmin devices to send jobs and job-related instructions directly to your drivers, and provide the most accurate directions.
- **Garmin Job Management** : Jobs and routes created within StreetEagle or an integrated business application can automatically be sent directly to the Garmin unit.
- **Garmin Messaging**: Communicate with drivers by sending messages and work order information via StreetEagle Software to the Garmin unit.
- **Driver Status**: Drivers can easily inform fleet managers and dispatchers of their current status via the Garmin unit.



- **Time Clock Reports**: Employees can clock in using the Garmin unit, avoiding a trip to the office and beginning the workday with more prompt and focused customer service.



Maintenance

StreetEagle's automated vehicle maintenance provides fleet managers with a hands-free reminder of scheduled vehicle maintenance events.

- StreetEagle's automated vehicle maintenance provides fleet managers with a hands-free reminder of scheduled vehicle maintenance events. Automatic email alerts warn managers of upcoming items needing service, and service reports provide a detailed maintenance checklist for your entire fleet.
- Unlimited scheduled maintenance profile definitions for oil changes, tires, inspections, etc.
- Schedule based on any combination of elapsed mileage, engine operating time, and/or calendar time.
- Track and record vehicle maintenance expenses for budgeting and planning purposes.
- Total Engine operating time and vehicle odometer synced within StreetEagle allows managers to determine the longevity of the vehicles in your fleet.
- Avoid Unforeseen repairs.
- Maintain a healthy fleet.
- Access the mechanical fitness of your mobile equipment.
- Take the guesswork out of your fleet maintenance operations.



Sensor Monitoring

StreetEagle intelligence provides the following real-time "Proof of Service" by monitoring sensors and critical access points on your vehicle.



KPI Dashboard

In a single view, Visually displays driving performance data on an individual or company-wide level, such as: speeding, idling, driver behavior events, vehicle usage and more. From basic vehicle metrics such as driving time, mileage, speeding and idling to more advanced analytics like driver behavior events and fuel usage, the Dashboard reveals driving performance on an individual or company-wide level whenever you need it – and automatically tracks the data for trending and benchmarking.

With more than 70 available performance metrics, each user has the ability to create a personalized dashboard. Key performance metrics include workday start/end times, idle time, safety violations and ratios of travel, stop or work time.



FALKEN
Secure Networks



The KPI Dashboard provides an any-time, rea-time evaluation of performance in selected critical areas such as speeding, excessive idling, driving behavior and vehicle telematics and usage.





Vehicle Diagnostics

Real-time reports and alerts to keep you informed of maintenance needs, fuel usage, driver analytics and more. Leverage StreetEagle Vehicle Diagnostics, when integrated with StreetEagle Maintenance, to gain insight into:

- True odometer and engine run time to diagnose vehicle health
- Total fuel consumed and fuel economy data
- Engine speed (RPMs)
- DTC diagnostic codes
- Fluid temperature readings (for oil and coolant)
- Real-time notifications for seat belt usage violations
- What aggressive driving is actually costing you (comparing fuel economy and maintenance costs to driver behavior data)



Fuel Card - Available in US and Canada

A fully-integrated fuel management solution that provides data reporting to analyze fleet fuel consumption, verify usage, benchmark efficiency and more.



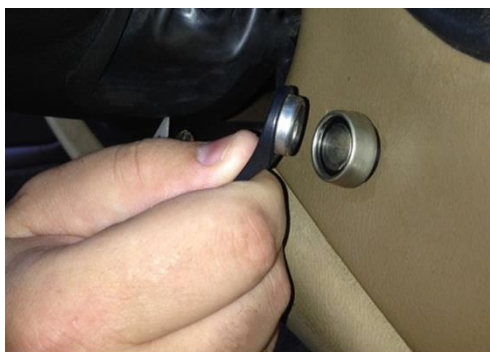
Driver ID Keep track of your drivers' vehicle assignments and monitor an employee's activity from vehicle to vehicle.

The app allows the driver to set their status via their smartphone or Garmin.

THE DRIVER IDENTIFICATION TOOLS MAKE IT POSSIBLE FOR FLEETS TO:

- Measure and monitor individual driver activity and hours
- Allow drivers to login from the vehicle via simple onboard devices
- Provide a means to "score" individual driving performance
- Assign vehicles to different drivers without losing individual data
- Enable drivers to clock in and clock out from the road

Picture on right - Driver ID app on iPhone5



Picture on right: iButton for Driver ID



Driver Behavior

Data from an enhanced telematics system can help you create good driver incentive programs that set and manage expectations, for employees or customers. Measure and evaluate unsafe driving practices such as speeding, sudden braking and hard cornering to improve individual and fleet-wide performance. These valuable reports provide you with the information you need to ensure compliance with company driving safety standards, protect your company's reputation and save money on fuel and vehicle maintenance costs.



Electronic Logbooks

Ensure your compliance to Federal and state mandates – and the safety of your drivers – with our fully automated, paperless EDL solution. Drivers can submit Hours of Service and Inspection data painlessly, using any smart device



Transit-Available in USA

Real-time tracking technology to keep your public transit riders informed and your drivers on time.



Trailer and other Mobile Asset Tracking

Trailers, either empty or full of high value cargo, can become disassociated from the truck tractor or even hijacked by a separate tractor. Keep careful track of the location, status and usage of any field-based asset – either in the office or on the road via mobile apps. See the PULSE AT, PULSE TT/TTL GSM/GPRS cellular based tracking devices and Streteagle Loceight for non-cellular coverage areas hosted via Globalstar Simplex Data Network.



PULSE TT for powered Assets

PULSE AT for non-powered mobile assets



Mobile Apps

StreetEagle delivers a wide variety of mobile solutions to empower your team to make smart decisions based on real data, wherever your business takes you.



Asset Scanning via NFC RFID

A simple way to locate missing assets/equipment, provide proof of service, and manage inventory from anywhere using the almost ubiquitous NFC-enabled smartphone as the reader. Also available for UHF RFID and Barcode.

StreetEagle Web Services API

Integrating StreetEagle GPS intelligence into your software application has never been easier. StreetEagle WEB Services provide a suite of function calls to supply developers with a comprehensive data feed for ease of integration. With the StreetEagle WEB Services developers guide, sample .NET web apps for testing, and senior development support for assistance, your developers have the full gambit at their disposal.



INSIGHT Mobile Data with over 15 years of experience in GPS vehicle tracking, StreetEagle continues to be a leader in the industry. Our nationally recognized StreetEagle Tracking Solutions suite provides the ability to capture, analyze and integrate mission-critical data from ALL mobile assets ,vehicles and field-based employees - in one fully configurable and user-friendly platform.



FALKEN Secure Networks(FSN) is an Authorized Value-Added Reseller and System Integration Partner of Insight Mobile Data. FSN is focused on real-time enterprise operational visibility and process improvement for challenging environments with RFID, GPS, Biometric and Sensor technologies as its "eyes".

For more information or to place an order.....



FALKEN Secure Networks Inc

647-930-7373 (CANADA)

sales@falkensecurenetworks.com

